

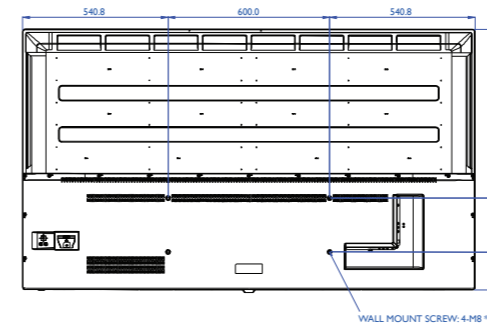
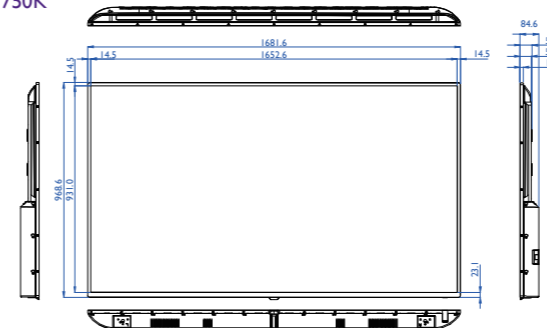
Immersive Life-Size Models Displayed with 4K Clarity

Foster Unparalleled Brand Image and Customer Connection with Ultra Large BenQ Smart Signage

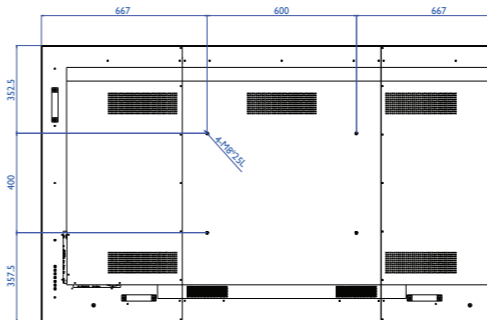
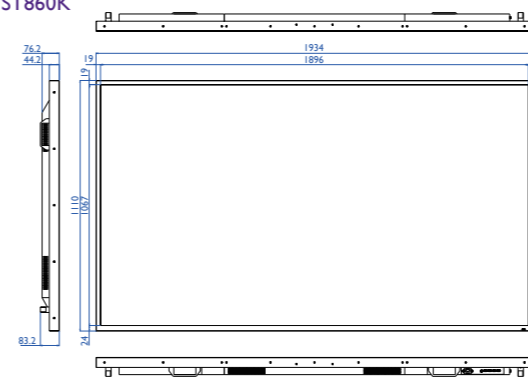


Dimension

ST750K



ST860K



Specifications

Model	ST750K	ST860K	
Panel	Screen Size	75"	86"
	Backlight/Lightsource	D-LED	D-LED
	Active Area (horizontal × vertical)(mm)	1649.7 × 927.9mm	1895.0 × 1096.0mm
	Resolution (pixels)	UHD 3840 × 2160	UHD 3840 × 2160
	Brightness (typical)	450 nits	400 nits
	Contrast Ratio (typical)	1200:1	1200:1
	Viewing Angle (horizontal/vertical)	178° / 178°	178° / 178°
	Aspect Ratio	16:9	16:9
	Light Life (typical)	30,000hrs	30,000hrs
	Display Orientation	Landscape	Landscape / Portrait
Audio	Internal Speaker (Amp)	8W × 2	10W × 2
	Audio In/Out (left/right, RCA)	x1 / No	x1 / No
	Audio Line In/Out (3.5mm)	No / x1	No / x1
Connectivity	HDMI In/Out	2.0x3 / No	2.0x3 / No
	USB port (Type A)	x4 (2.0 x3.3.0 x1)	x4 (2.0 x3.3.0 x1)
	RJ45 Port In/Out	x1 / No	x1 / No
Power	AC/DC In	AC	AC
	Voltage	100V ~ 240V, 50Hz / 60Hz	100V ~ 240V, 50Hz / 60Hz
	Power Consumption (typical/standby)	156W ±0.5W	156W ±0.5W
Mechanical	Dimension (W×HxD) (mm)	1681.6 × 968.6 × 84.6 mm	1934.0 × 1110.0 × 83.2 mm
	Bezel Width (top/bottom/left/right) (mm)	14.5 / 23.1 / 14.5 / 14.5 mm	19.0 / 24.0 / 19.0 / 19.0 mm
	Weight (w/o Packing/ w/ Packing) (kg)	34.0 kg / 45.7 kg	64.8 kg / 84.5 kg
	Wall Mounting (VESA) (mm)	600 × 200 (4 holes)4 - M8 × 10L	600 × 400 (4 holes)4 - M8 × 25L
Environment	Operation Temperature	5°C ~ 40°C	0°C ~ 40°C
	Storage Temperature	-20°C ~ 55°C	-10°C ~ 60°C
OSD	On-Screen Display Languages	English / French / German / Dutch / Polish / Russian / Czech / Danish / Swedish / Italian / Romanian / Finnish / Norwegian / Greek / Hungarian / Spanish / Portuguese / Traditional Chinese / Simplified Chinese / Arabic / Japanese / Thai / Persian / Vietnamese (24L)	
Software	Multiple Display Control (MDA) Support	Yes	Yes
	X-Sign	Yes	Yes
Accessory	Remote Control	Yes	Yes
	Power Cord(by region)	Yes	Yes
	HDMI Cable	Yes	Yes
	Quick Start Guide	Yes	Yes
	User's Manual Electronic File	Yes	Yes

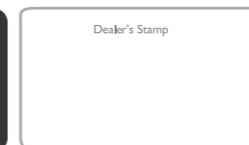
*Please check BenQ Display website for more detailed information. <http://business-display.benq.com/>

Input/output terminals



- 1 USB-4**
Access multimedia files on USB drives directly.
- 2 USB-3(3.0)**
Access multimedia files on USB drives directly.
• The users cannot use the USB port to update the software.
• The USB ports only support FAT / FAT32 format.
- 3 USB-2**
Access multimedia files on USB drives directly.
- 4 USB-1**
Access multimedia files on USB drives directly.
- 5 COAXIAL OUT**
Output digital audio signals via a coaxial cable to an external device.

- 6 LAN**
Receive the control signals from LAN interface / a computer, connecting RJ45 terminals (This network port is only used for the closed Android OS on this product).
- 7 AV-IN**
Composite video and audio input.
- 8 HDMI-3**
Receive 4K2K 60Hz supported signals from an external device.
- 9 HDMI-2 (ARC)**
Receive 4K2K 60Hz supported signals from an external device. ARC (Audio Return Channel) allows you to transfer audio from the display back down the HDMI cable to a soundbar or a home theater receiver. You can listen to your display's audio through other audio systems instead of the display's speakers.
- 10 HDMI-1**
Receive 4K2K 60Hz supported signals from an external device.
- 11 AUDIO-OUT**
Output audio signals to an external device.



Android is a trademark of Google Inc. The Android robot is reproduced or modified from work created and shared by Google and used according to terms described in the Creative Commons 3.0 Attribution License.

© 2017 BenQ Corp. Specification may vary by region, please visit your local stores for details. Actual product's features and specifications are subject to change without notice. This material may include corporate names and trademarks of third parties which are the properties of the third parties respectively. Doc: DSP_ST750K/ST860K_D5_EN_201711

ST750K / ST860K

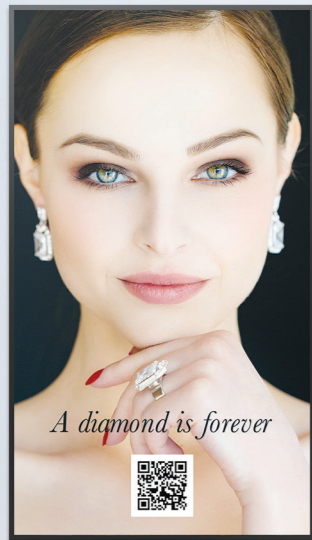


BenQ

Because it matters

BenQ

Because it matters



Maximize Message Impact with 1:1 Life-Size Imagery

Featuring ultra large 75-and 86-inch screens, ST750K/ST860K let operators effortlessly fit life-size images onto a single display. Shoppers will be dazzled by full-size depictions that accurately represent the shapes, colors, and textures of the actual products.

The All-In-One Solution for Delivering Eye-Catching 4K Content

Offering the highest resolution in the market, the Android-powered ST750K/ST860K are prepared for the 4K revolution. ST750K/ST860K and their 4K2K capabilities are ready to show off stunning content with four times the detail of full HD displays. Moreover, ST750K/ST860K use the embedded X-Sign Player to display 4K content without the need for an external player.



Convert Shoppers into Customers with Captivating 4K Image Quality

ST750K/ST860K come with BenQ's exclusive X-Sign cloud-based content management software, the powerful 4K integrated solution for operators to create, schedule, and display 4K content that dazzles shoppers. Requiring no server setup, X-Sign is optimized to scale up alongside a growing business while using minimal manpower and resources.



Easy Content Creation



Create Riveting Signage Content with Dynamic Built-in Templates and Elements

Over 140 Built-in Templates

X-Sign comes with over 140 built-in templates, professionally designed for a variety of retail promotion scenarios. X-Sign's 4K templates are optimized for embedding 4K images and video, ensuring flawless presentation on 4K Smart Signage.



Optimize Reach with Real-Time Promotional Tools



Instant Price Updates

Updating prices and other fluctuating content is easy. Operators just need to modify a centralized .csv file in the cloud.



QR Code Interaction and Analysis

X-Sign allows operators to embed QR Codes that, when scanned, can offer customers the latest promotional information. X-Sign also offers QR Code analysis to let operators see when and where customers are interacting with content. This analysis can help operators quickly adjust their offers to match customer interest.



Real Time Messagess

X-Sign lets operators push real-time messages to the display network to create instant excitement.



Broadcast YouTube Live Streaming across Multiple Displays*

With X-Sign, operators can insert live YouTube broadcasts of product launches on Smart Signage in real time, which makes promoting new products instant and easy.

* Available on X-Sign 2.0

Easy Content Distribution

X-Sign allows operators to display digital content anywhere, anytime. Built to support retail store environments both big and small, X-Sign offers three ways to distribute scheduled content:



Network Distribution via the Cloud

Centralized Management of Multiple Locations and Displays

Take the stress out of distributing content across a massive display network. Once the displays are connected to the Internet, X-Sign allows operators to distribute content to all remote locations through a single calendar-based web interface. With this centralized web interface, operators not only can assign content to play at a specific time or resolution but also can instantly modify the schedule and activate an interrupt to display any newly added content.



Local Delivery via LAN*

One-Stop Management of All Displays in Store

These days more and more businesses are using LAN infrastructure to connect all in-store devices, including phones, PCs, and retail displays. With X-Sign, by connecting both a laptop and the Smart Signage to the same LAN network, operators can distribute content to be played on the assigned display.

* Available on X-Sign 2.0

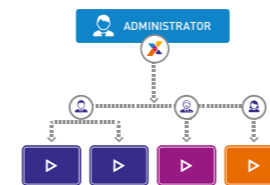


Plug and Play with USB Flash Drive

Simple Single-Display Management

Operators without a network can still save scheduled content to a USB flash drive and plug it into Smart Signage to play the content.

Centralized User and Device Management



Administrator Management and User Hierarchy

With X-Sign's powerful management tools, administrators can:

- Review all changes in content before it goes live.
- Set up multiple user accounts with varying degrees of access and track issues through the activity log.



Centralized Remote Device Monitoring and Display Control

X-Sign's intuitive tree map interface makes it easy to:

- Monitor display performance in real-time.
- Control basic device functions, such as screen on/off mute, and restart
- Rearrange playlists and device lists with drag-and-drop simplicity.

Hassle-free Display Management Made Possible

MDA (Multiple Display Administrator)

Operators can remotely control display on/off time or backlight via LAN or RS232.

DMS 1.0 (Display Management System)

Install Android™ apps for a selection of displays through BenQ's cloud server.

OTA (Over-the-Air) Update

Keep all display drivers up-to-date with easy firmware update.