



\* All images in this datasheet are for illustrative purposes only and may differ from the actual product.

# LG LED All-in-One 136-inch

All-in-One LED Screen

Dedicated Accessories

Compatible with **LG One:Quick** Share



Easy Installation Quick Maintenance

Compatible with LG Magic Remote

Cabinet	LAEC
Inch	136"
Pixel Pitch	1.56 mm
Brightness	500 nits
Screen Resolution	1,920 × 1,080
Serviceability	Front
Speaker	Built-in
Controller	Embedded



### All-in-One LED SCREEN

The LAEC is a 136-inch all-in-one large-screen package that includes an embedded controller, easy-to-reach HDMI connectors and a built-in speaker. You can think simply about this LG DVLED screen, because after the simple installation process, all you need to do is to turn on the screen with the remote control like a home TV.



### QUICK MAINTENANCE

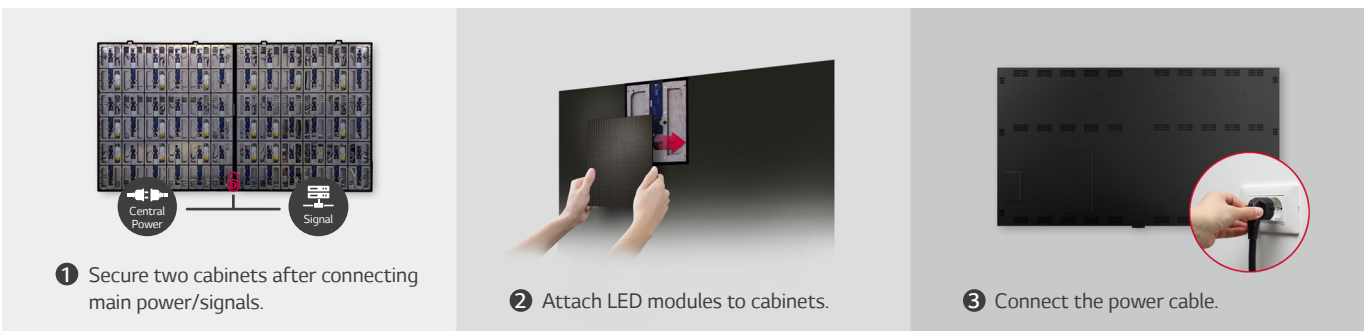
Front-access service allows LED modules to be detached simply with the included magnetic tool and replaced quickly without cabling.



### LG One:Quick<sub>Share</sub> SCREEN SHARING SOLUTION

LG One:Quick Share is a wireless screen sharing solution available on the LAEC series, using a USB accessory and its software app. Simply share your PC screen to the display pressing the USB accessory button and adjust basic setting values (volume, picture mode, auto bright, etc.) of the connected display as needed without a remote control. The software also features Office Meeting Mode\* which automatically displays the meeting agenda and notes before the meeting starts.

\* Users need to set up Soft AP enabled at Network Menu of the Signage. Users can enable Office Meeting Mode at EZ Setting Menu of the Signage. LG One:Quick Share needs to be purchased separately.



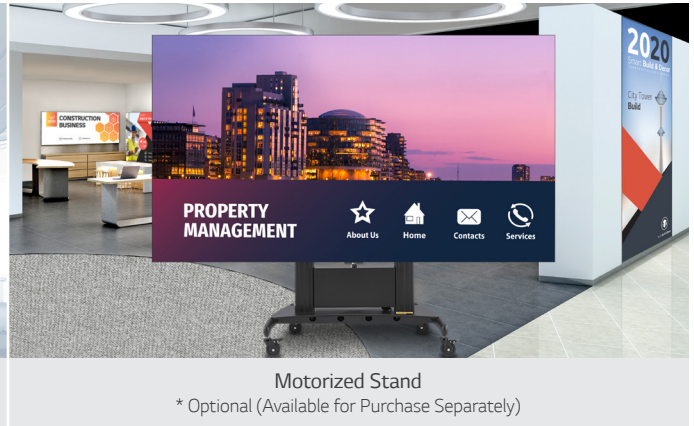
### EASY INSTALLATION

The installation process of the All-in-one Essential series is very simple. After securing two cabinets which are included in the flight kit, attach each LED display module to them. Lastly, plug in the power cable. This hassle-free installation saves time and labor, thereby making users handle the LED screen with ease. In addition, the fact that this massive 136" screen only uses two cabinets helps minimize variations.





Flight Case & Landscape Wall Mount



Motorized Stand

\* Optional (Available for Purchase Separately)

## DEDICATED INSTALLATION ACCESSORIES

Unlike some signage products that are delivered in cardboard boxes wrapped on shipping pallets, this model ships ready-to-assemble in a professional, wheeled flight case making it easier to transport inside your facility without the need for a pallet jack. The all-in-one case includes every component necessary, including the landscape wall mount and tools for installation. Also available for this screen is a mobile stand on wheels. The stand has a motorized height adjustment that allows you to easily change the height of the display over a foot and a half to comfortably accommodate either sitting or standing audiences.



## SIMPLE POWER CONNECTION

The LAEC series is operated with a single or double AC cable\* without the need for a complicated power connection and enables neat installation.

\* Two AC cables are needed for 110V AC.



## REAL-TIME LG ConnectedCare

Maintenance is easy and fast with the optional LG ConnectedCare\* service, a cloud service solution provided by LG. It remotely manages the status of displays in client workplaces for fault diagnosis.

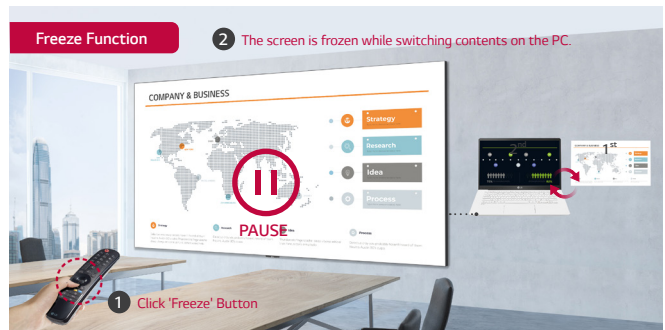
\* The availability of LG ConnectedCare differs by region.



## Compatible with AV Control Systems

The LAEC series supports Crestron Connected®\* for compatibility with professional AV controls.

\* Initial setting from display is required for Crestron Connected® compatibility.



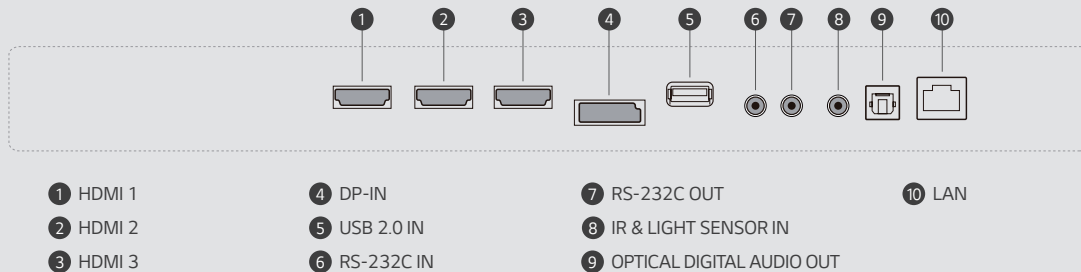
## Compatible with LG Magic Remote

The optional LG Magic Remote (sold separately) has an onscreen mouse cursor that can be used as an onscreen pointer for presentations.

## SPECIFICATIONS

	MODEL NAME	LAEC015-GN	
PHYSICAL PARAMETERS	Pixel Configuration	3 in 1 SMD	
	Pixel Pitch	1.5625 mm	
	Screen Resolution	1920 x 1080	
	Module Dimensions (W x H)	250 x 281.25 mm	
	Modules per Screen (W x H)	12 x 6 (Total 72)	
	Screen Resolution (WxH)	1920 x 1080	
	Screen Dimensions (W x H x D)	118.1 x 66.4 x 1.4 in 3,000 x 1687.5 x 36.5 mm	
	Screen Dimensions Including Bezel (W x H x D)	118.3 x 66.6 x 1.4 in 3,004.6 x 1692.1 x 36.5 mm	
	Screen Surface Area	54.5 ft <sup>2</sup> / 5.0625 m <sup>2</sup>	
	Weight of the screen	284.4 lbs / 129 kg	
	Physical Pixel Density	409,600 pixels/m <sup>2</sup>	
	Flatness of Unit Case	±0.2 mm	
	Unit Case material	Aluminum	
	OPTICAL SPECIFICATIONS	Service access	Front
Built-in Speakers		9W + 9W	
Brightness		500 nits	
Color Temperature		3,200 to 9,300 K	
Visual Viewing Angle (Horizontal)		160°	
Visual Viewing Angle (Vertical)		160°	
Brightness Uniformity		98%	
Color Uniformity		±0.015Cx,Cy	
Contrast Ratio		3,000	
Processing Depth		16 bit	
ELECTRICAL SPECIFICATIONS		Max Power Consumption	2,000 W   395 W/m <sup>2</sup>   1,348 BTU/m <sup>2</sup>
		Average Power Consumption	800 W
		Max Power Consumption per Hour	6,824 BTU
		Average Power Consumption per Hour	2,730 BTU
	Power Supply	100 to 240 V	
	Frame Rate	50 / 60 Hz	
	Refresh Rate	≥ 2,880 Hz	
OPERATION SPECIFICATIONS	LED Lifetime (Half Brightness)	100,000 hours	
	Operating Temperature	32 to 104 °F / 0 to 40 °C	
	Operating Humidity (without condensation)	< 90% RH	
	IP rating Front	IP30	
	IP rating Rear	IP20	
WARRANTY & OTHER	Warranty	3 Year Limited	
	Regulatory	FCC   CE	
	Environment	RoHS   REACH	
	Embedded Controller	webOS	
	Connectivity	HDMI (x3), DP (x1), USB, LAN, RS232C In/Out, IR, SPDIF	

## CONNECTIVITY



\* Jack Panels may differ from the above image, so please contact LG sales team to verify before ordering.