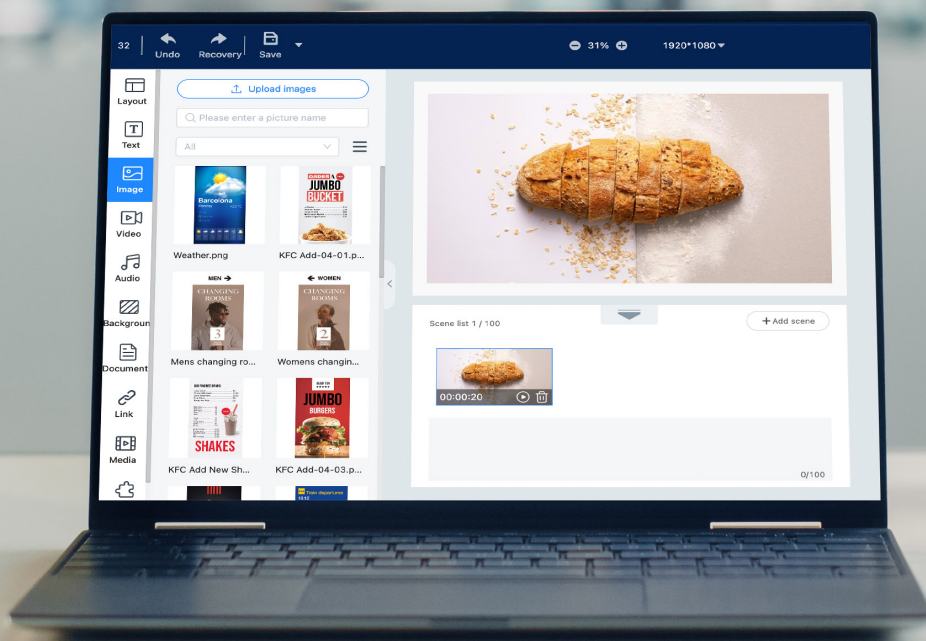
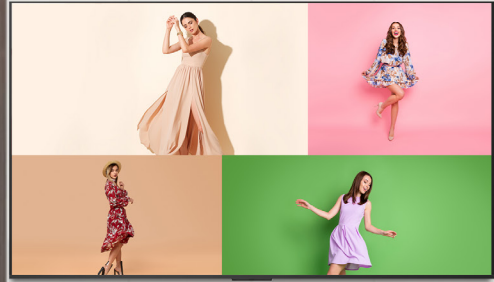
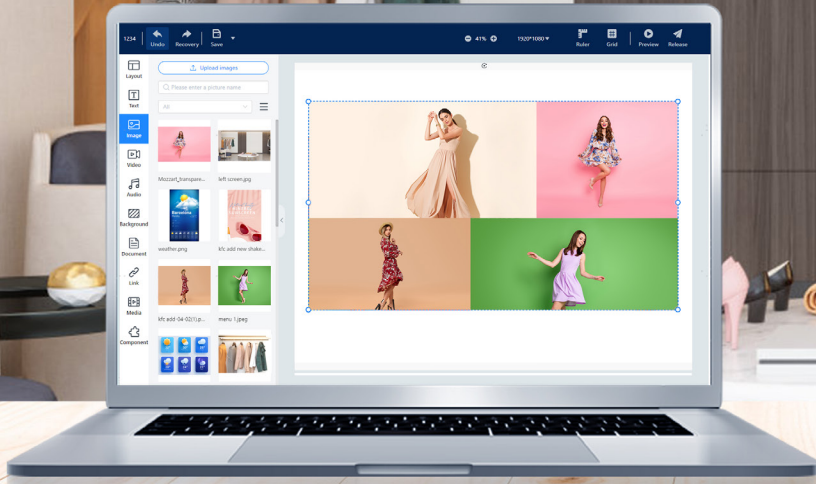


# VisionInfo

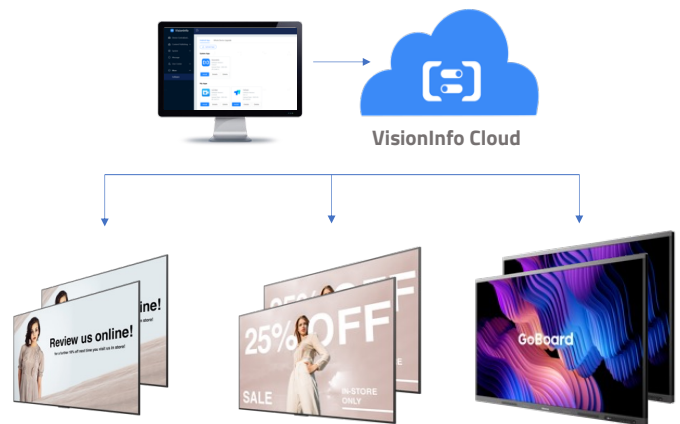




## Why Choose VisionInfo

### Flexible and Scalable Solutions

VisionInfo from Hisense is our cloud-based digital signage software which is flexible, cost-effective, and infinitely scalable for users. VisionInfo includes a comprehensive CMS solution and advanced remote display management features. It provides users the freedom to edit and publish content while ensuring it looks great across all displays in a system. It is a powerful, effective and easy to use tool to manage content and control your displays at anytime from anywhere.



### Key Features

- Web browser editor UI
- Drag-and-drop visual editor
- Supports website integration
- Supports live streams
- Supports Office documents and PDF's
- Supports Widgets
- 4K resolution playback
- Offline content playback
- Program preview and publish approval
- Advanced program scheduler
- Custom template layouts
- Playback statistics

## The Complete Solution

# 1

### Intelligent Content Management

Effortlessly manage, customize and deliver your message with our intuitive CMS platform. Streamline content creation and engage your audience with our powerful, user-friendly platform.



Content Creation



Dynamic Scheduling



Content Publishing

# 2

### Enterprise-Grade Device Management

Empower your business with remote monitoring and control of displays on an installation. Safeguard your digital content with the robust security features of VisionInfo. Protect your displays and marketing content from cyber threats, ensure data privacy, and enjoy total peace of mind.



Remote Monitoring



Complete Control



Error Notifications

# 3

### Enhanced Data Management

Unlock the power of data with our advanced analytics and reporting feature within VisionInfo. Gain valuable insights, make data-driven decisions, and maximize the performance of your content.



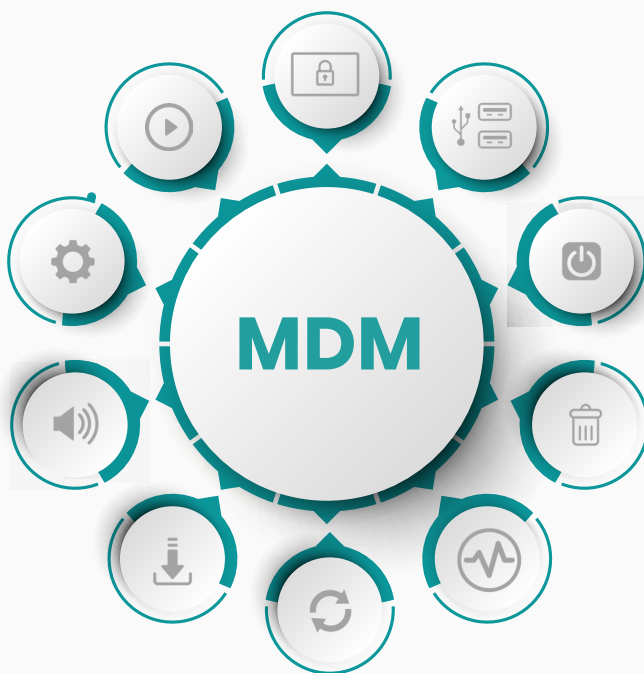
Routine Automation



Data Analysis



Visual Reporting



### Mobile Device Management

- View the status of remote displays - online/offline, CPU and memory running status
- Real-time display control - power off, screen sleep/wake up, reboot, switch signal source, screen lock/unlock, USB disable/enable
- Remote desktop real-time monitoring
- Scheduled tasks to control displays - power On/off, screen sleep/wake up
- Remote software management - APP installation and uninstallation, remote OS Upgrade
- Display usage statistics



## Key Features

---



### Visual Reporting

VisionInfo presents data and analytics in a visual format, such as charts, graphs, and interactive dashboards. It enables users to easily understand and interpret complex data sets related to content performance, audience metrics, engagement levels, and other key indicators.



### Routine Automation

Routine automation within VisionInfo allows users to create automated processes within the software to streamline repetitive tasks and workflows. It involves interactive tools to automate content publishing, updating applications and display maintenance. This dramatically improves efficiency and ensures consistent quality across the CMS environment.



### Error Notifications

Error notifications are a vital element within any remote system allowing users to be notified instantly when an error or issue occurs within the CMS environment.



### Remote Monitoring and Control

Remote monitoring within VisionInfo allows users to track and monitor the status, settings and health of any display within an installation. This includes monitoring key metrics such as uptime, content delivery, user activity and security.



### Content Creation

Utilise the powerful features within the VisionInfo platform to create, publish, and manage digital content, empowering users to produce and distribute engaging materials for their audience.



### Drag-and-Drop Visual Editor

Utilise the drag-and-drop feature within the VisionInfo platform to view and organise widgets, videos, images, webpages, weather reports and clocks. Users can then easily drag and drop input media and sources into the layout.



### Content Publishing

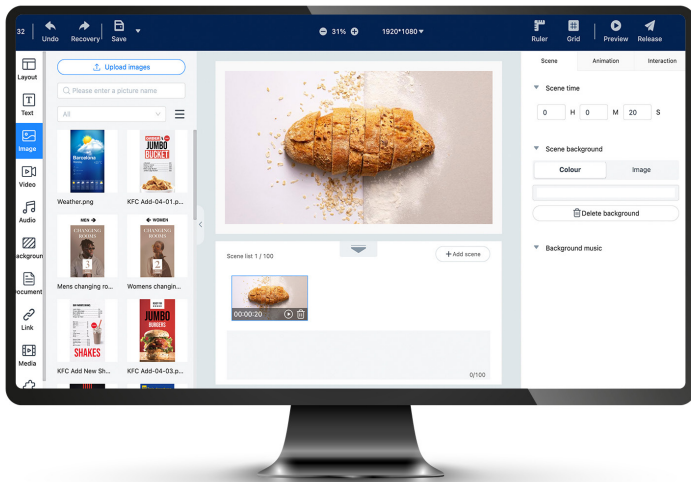
VisionInfo makes it effortless to create, edit and organise digital content within our CMS platform. Users have full control making content available to the intended audience through a simplified publishing process.



### Data Analysis

The Data Analysis module enables interpretation of the data generated within the VisionInfo platform. This includes analysing engagement and device behaviour to gain insights into content performance and audience preferences. This analysis helps inform content strategy and decision-making to enhance user experience.

# Intelligent Content and Display Management



## Drag-and-drop visual editor

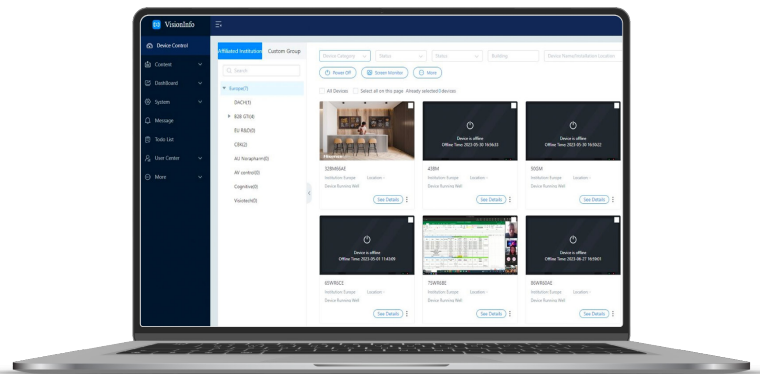
A clear view of widgets list including video, image, webpage, and weather, clock listed as a tool bar. Users can easily drag and drop widgets and input media, sources in to edit layout. Entire editing tool is designed for easily accessible in WYSIWYG concept.

## Rich Component support

Rich components and effects such as text, images, Microsoft Office documents, PDF's, web pages, streaming media, backgrounds, clocks and QR codes are all supported to help users easily create cooler and more stunning content with better promotional effects.

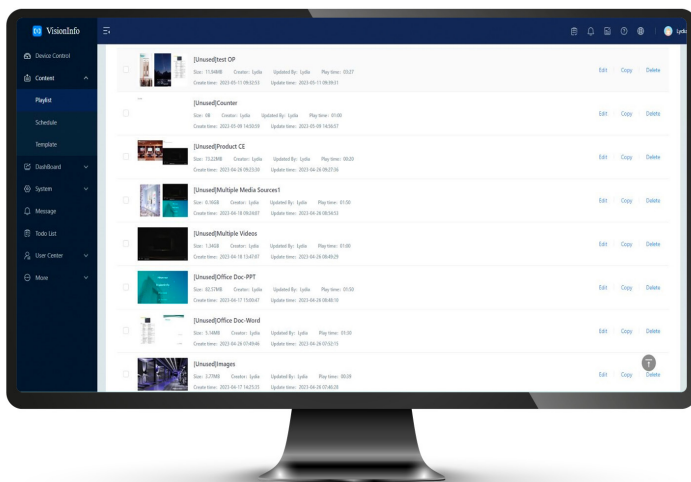
## Powerful playback supporting real-time modification

VisionInfo supports real-time modification capability within the system to modify and update schedules and video conten. This feature enables users to make instant changes to the playback parameters, such as source, volume, effects, or other aspects, without interrupting the playback itself.



## Off-line Playback

Even when the network is disconnected, VisionInfo ensures the displays can utilise internal memory for off-line playback, ensuring that the display is always showing engaging content.



## Expanded insight with proof of play analysis

By incorporating expanded insight with proof of play analysis, VisionInfo goes beyond content management and provides valuable data-driven insights. It helps organisations understand how their content is being consumed, make data-backed decisions, and optimise their content strategies for improved outcomes.



**The perfect solution for Quick Service Restaurants**

VisionInfo can accommodate the growth and evolving needs of a growing business. It allows for scalability as new locations or devices are added. Additionally our platform offers customisation options allowing you to perfectly tailor the system to specific requirements and branding.

VisionInfo allows QSRs to easily manage and update their menus in real-time. This includes adding new items, modifying prices, updating descriptions, and managing limited-time offers or promotions. It ensures that menus across all locations are consistent and up-to-date.

VisionInfo also supports remote monitoring and control so you can check volume levels, change display sources, use reboot functions and check display status including CPU usage and memory usage. In national chains of restaurants this is ideal to ensure all your displays are delivering consistent content and working correctly.

**Enhanced collaboration for Education**

Using VisionInfo within an Education environment simplifies content management, fosters collaboration, supports personalised learning and can often save time and cost. Further to this VisionInfo can improve communication, provides analytics for decision-making, and offers scalability and flexibility. It enhances the overall efficiency and effectiveness of educational processes, benefiting both students and staff members.





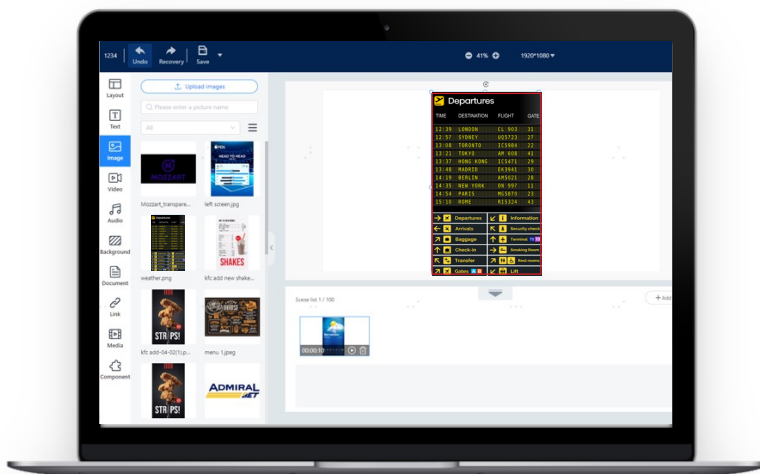
## Key Verticals

### Real-time information for transport hubs

VisionInfo enhances communication, provides real-time information updates, improves wayfinding, enables advertising opportunities, supports emergency management and streamlines operations. It creates a more informed, efficient, and passenger-friendly environment within any train station, airport or bus terminal.

In the event of emergencies or critical situations, VisionInfo enables quick dissemination of important alerts or safety notifications to passengers. This helps ensure their safety, provide instructions, and manage the flow of passengers during emergency situations.

Transport hubs can leverage VisionInfo to display targeted advertising content on digital signage screens. This opens up opportunities for generating revenue through advertising partnerships with businesses or promoting station amenities, services, or local attractions.



### Diversify your content management

Transport hubs often serve diverse international travelers. VisionInfo allows for multilingual content management, ensuring that information is accessible to passengers in their preferred language. This improves communication and provides a more inclusive experience.

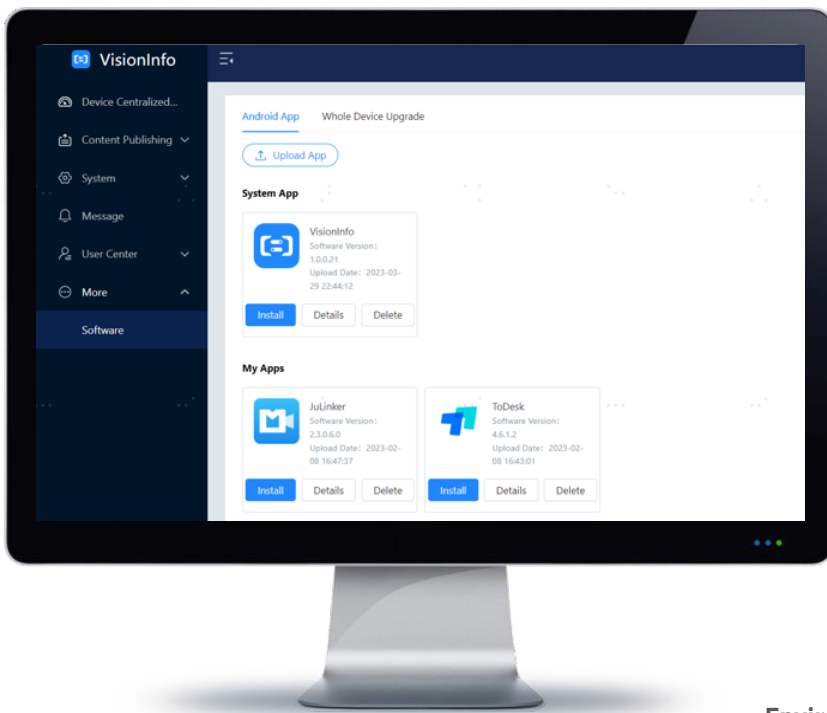
Display dynamic and real-time content on digital signage, such as arrival and departure information, platform details, delays, and other updates.

### System security design

Encrypted https transmission is used to provide access control with the basic granularity of software functions and user operating behavior characteristics. User login requires encrypted verification, terminal access requires ID authentication and core data is stored encrypted.

### Login security

Users log in with a valid password and verification code. We enforce delayed logins for a number of failures over a specific threshold and forced logout for long periods of no operation. Encrypted transmission of sensitive user data, users can be forced to change their passwords regularly.



### Transmission security

VisionInfo uses encrypted transmission of programmed data and control commands. This becomes tamper-proof ensuring absolute data security for information distribution and system control.

### Data security

VisionInfo prevents SQL injection, cross-site scripting and other attacks. We also utilise regular database backups for peace of mind.

### Access security

VisionInfo is based on a modular design with multiple levels of authority allocation. We have support terminals for resource auditing and user role permissions configuration.

### Environmental security

Access control can be based on IP/port, following the principle of minimal access opening so only the necessary IPs and ports and following the principle of maximum control limiting access to source IPs



Contact your local Hisense Commercial Display distributor for more information.