

# MULTI DISPLAY WALL +



Look at that smart "Push and access"!

An easy way to mount an adjustable video wall

Build a video wall easily or place the screens in a row – and choose any number or design. It's simply a case of choosing as many modules as you need. Each module is supplied as a complete package with all necessary components, and can be set up in three easy steps. The solution makes it easy to place the screens exactly in line and allows edge-to-edge mounting for a perfect result. If you build a video wall you will appreciate a smart and economical finesse: the "Push" function that pushes a screen forwards to give easy access for service and/or exchange while all other screens remain in operation.



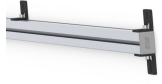
## ARTICLE NUMBER

PW010020  
SMS Multi Display Wall +

## INFO

<b>PLACEMENT</b>	Wall
<b>ROTATION</b>	Landscape
<b>LOCKABLE</b>	Yes
<b>MULTI DISPLAY</b>	Yes
<b>VESA HORIZONTAL</b>	100 - 900
<b>VESA VERTICAL</b>	100 - 400
<b>MAX WEIGHT [KG]</b>	45
<b>SCREEN SIZE</b>	37-60"
<b>WARRANTY [YEARS]</b>	5

# ACCESSORIES



**MULTI DISPLAY WALL PILLAR - 1X2000 MM**

PW010016

**MULTI DISPLAY WALL PILLAR - 2X2000 MM**

PW010006