

8. RS232 Control

Connect the RS232 port to control device (e.g. PC) with RS232 cable. The switcher can be controlled by sending the RS232 commands.

8.1 RS232 Control Software

Here take the software **docklight** as an example.

- **Installation**

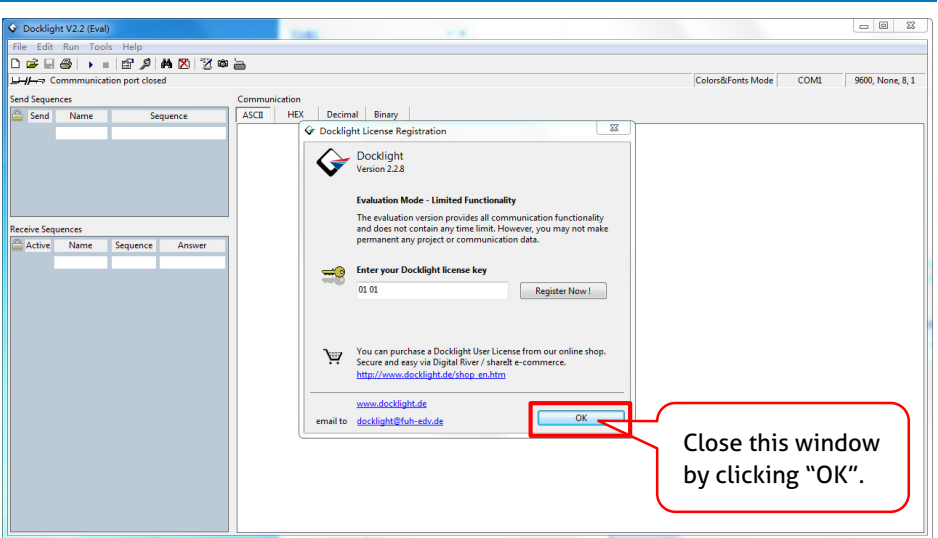
Please download the latest Software Version from the link below:

<https://docklight.de/download/Docklight.zip>

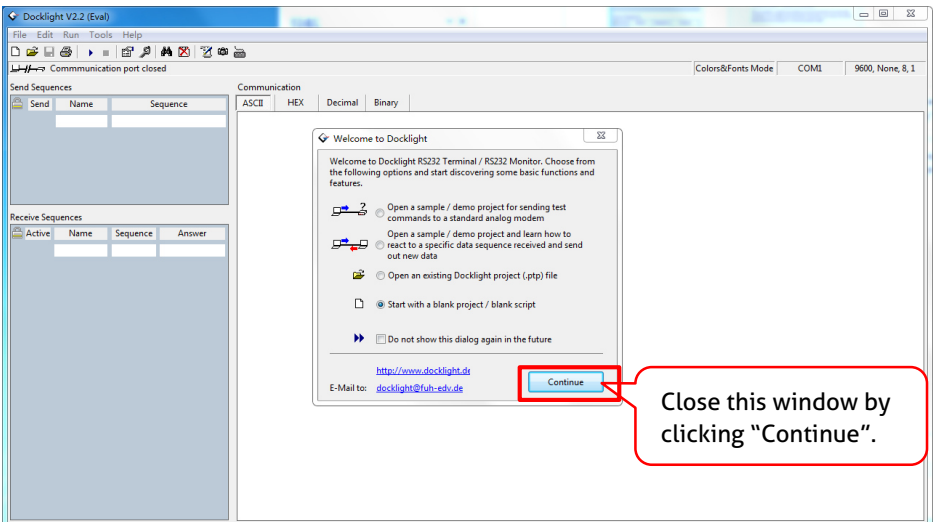
Then follow the installation wizard for installation on Windows 7 and 10.

After the installation, Docklight can be run for the first time and should look like the below screen shot:

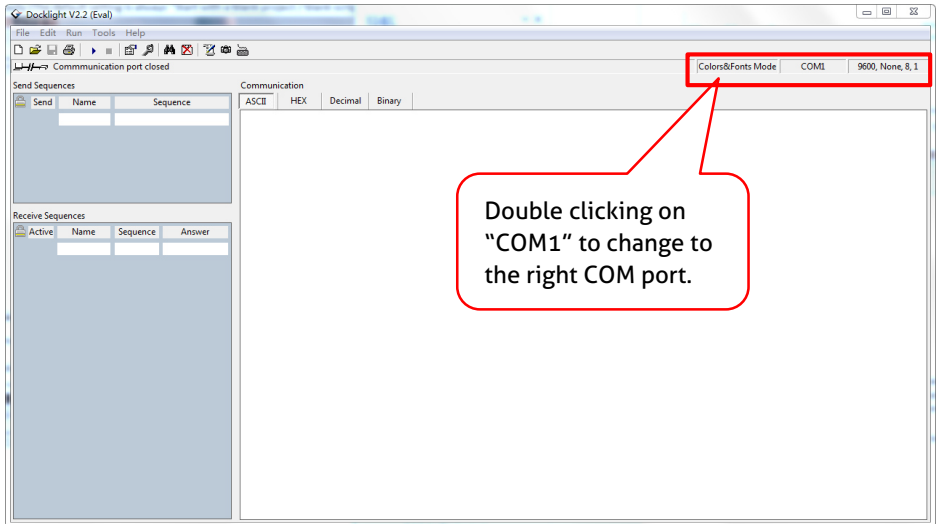
Registration is not necessary unless you wish to save settings on exit, so unless you wish to register click on "OK" to close the window.



The next pop-up window can also be closed with "Continue". An empty project is enough to send and receive commands easily (The default setting is always "Start with a blank project / blank script")

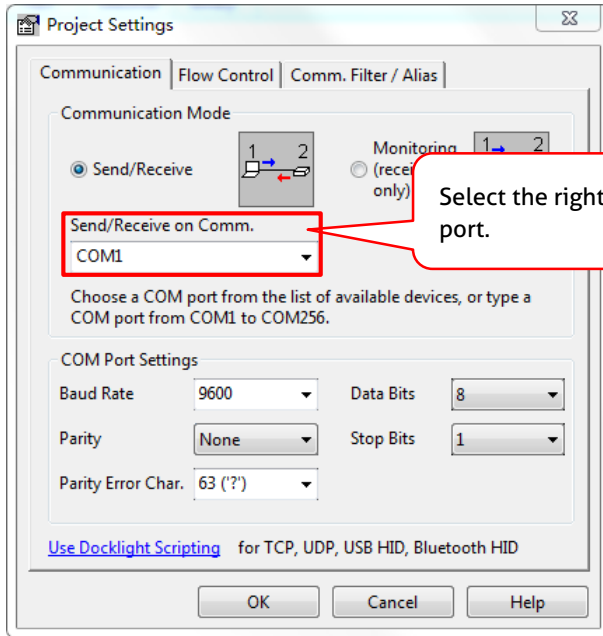


Now you are in the main view, where commands are sent and feedback is received. The next step is to select the correct COM port of the PC. To do this, double-click on "COM1" in the corresponding setup window.



In the following window, select the drop-down menu labeled "Send / Receive on Comm Channel", select the appropriate COM port and then click on "OK" at the bottom right corner.

All other settings can be left at default for most applications, but refer to device RS232 settings to be sure.



In order to be able to send commands, open communication with the device by clicking on "Play". **(1)**

Then the keyboard function must be activated, so that commands can be written in the "communication window". **(2)**

Finally enter the command, for example "50701%". This is then confirmed by pressing "Enter" to send. Any response from the connected device will appear in red. **(3)**

